



## Davidson Close

Hythe, Southampton SO45 6JT

- \*\*\* Guide price between £275,000 to £325,000 \*\*\*
- UNINTERRUPTED SEA VIEWS
- EN-SUITE + FAMILY BATHROOM
- ALLOCATED PARKING SPACE
- LOFT SPACE
- WATERFRONT TWO DOUBLE BEDROOM APARTMENT
- BALCONY OVER THE SEA
- SHORT WALK TO HYTHE VILLAGE CENTRE
- SPACIOUS LIVING
- KITCHEN WITH AMPLE STORAGE

Guide price £275,000 Leasehold





## Location

### Lounge/Diner

19'2 x 11'3

The living room is a bright space with double glass doors opening onto a private balcony offering uninterrupted views of the sea. A large archway leads seamlessly into the kitchen, enhancing the sense of openness and flow, making it ideal for both relaxing and entertaining.

### Kitchen

9'5 x 8'11

The kitchen combines style and practicality with ample storage and modern fittings. Natural light filters through from the adjoining living room, maintaining a bright and airy feel, while its open layout ensures you're never far from the stunning waterfront views just beyond the balcony doors.

### Bathroom

7'9 x 5'2

The bathroom includes bathtub with overhead shower, sink, and toilet.

### Master Bedroom

13'4 x 10'3

The master bedroom looks over the water through a large window, bathing the spacious room in natural light.

### En-suite

6'2 x 5'7

The en-suite includes a sizable shower, toilet, and sink.

### Bedroom 2

9'6 x 8'11

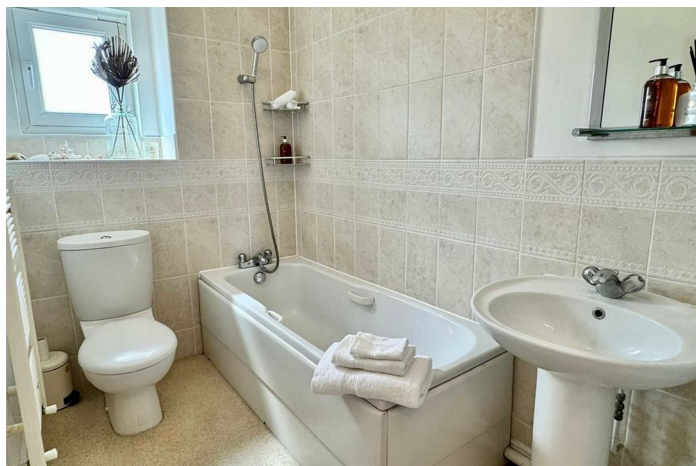
The second bedroom faces the other side of the property. There is plenty of space for storage and furniture.

### Balcony

6'4 x 4'6



Local Authority **NFDC**  
Council Tax Band **C**  
EPC Rating **D**



681 sq.ft. (63.3 sq.m.) approx.



**Citrine Estates Office**

7 High Street, Hythe, Southampton,  
SO45 6AG

**Contact**

023 81980 023  
christina@citrine-estates.co.uk  
www.citrine-estates.co.uk

Agents Note: Whilst every care has been taken to prepare these particulars, they are for guidance purposes only. All measurements are approximate and for general guidance purposes only and whilst every care has been taken to ensure accuracy, they should not be relied upon and potential buyers/tenants are advised to recheck the measurements.